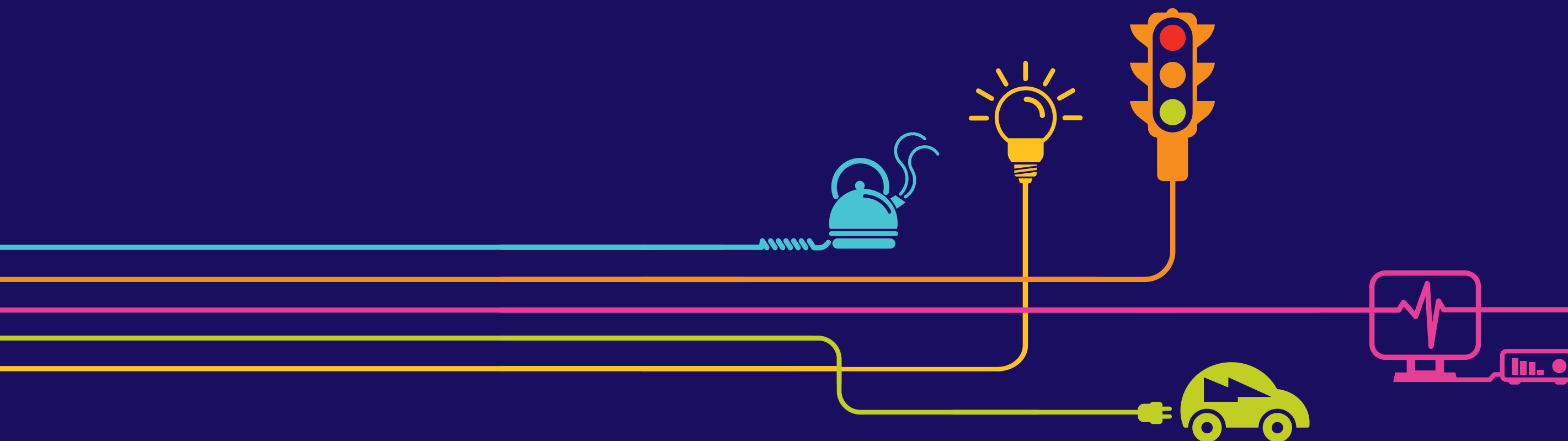


# Environmental Statement Project Need and Alternatives Figures 2.5 to 2.11

Hinkley Point C Connection Project

*Regulation 5(2)(a) of the Infrastructure Planning  
(Applications: Prescribed Forms and Procedure)  
Regulations 2009*



## Environmental Statement

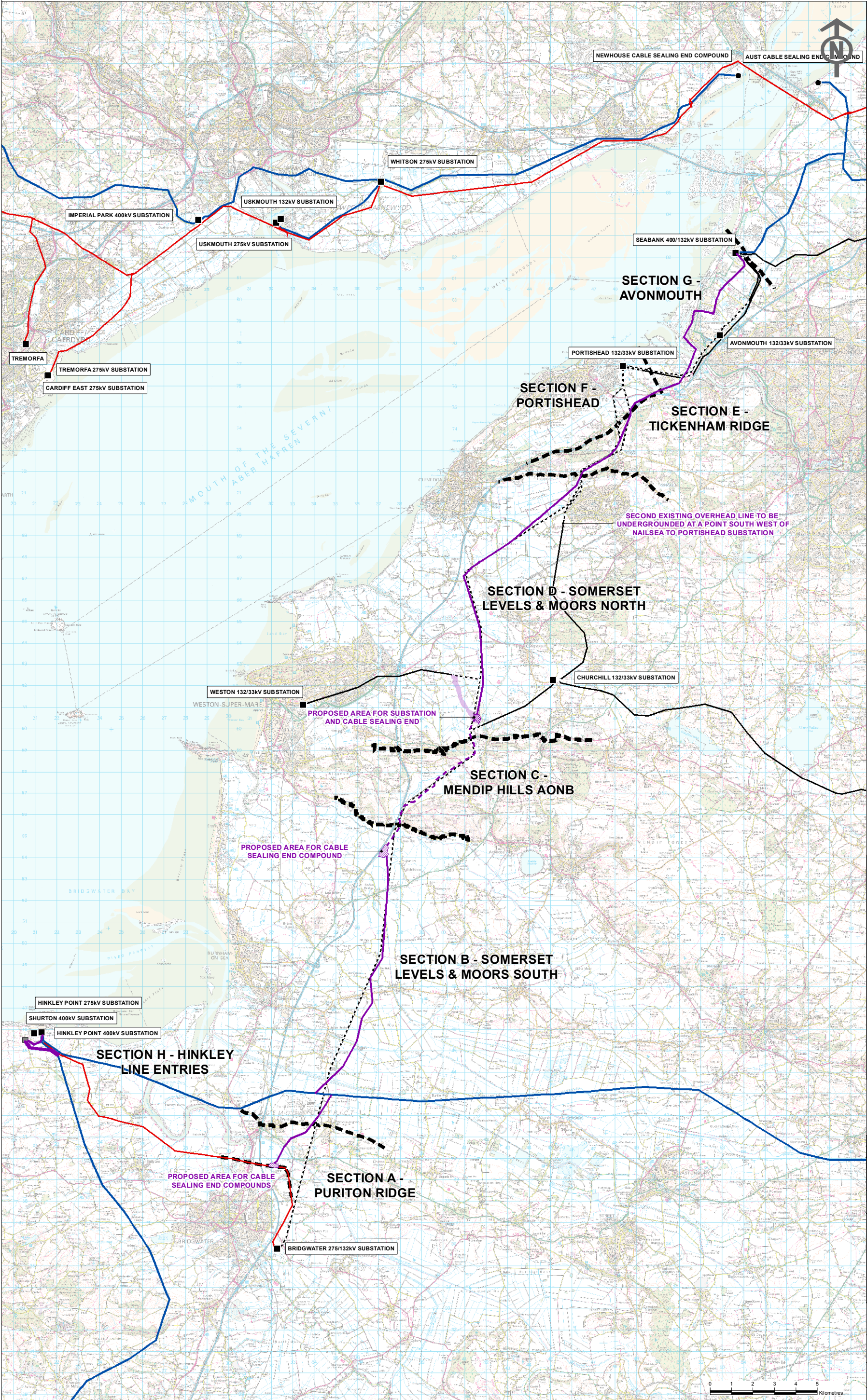
### Hinkley Point C Connection Project

#### 5.2.3 – Project Need and Alternatives – Figures (orange highlight indicates the contents of this Volume)

Figure	Title
<b>Volume 5.2.3.1</b>	
2.1	Study Area and Route Corridors
2.2	Preferred Route Corridor
2.3	Sections Considered in the Connections Options Report
<b>Volume 5.2.3.2</b>	
2.4	Connections Options Report Route Alignments and Hinkley Line Entries Draft Alignment Options
<b>Volume 5.2.3.3</b>	
2.5	Connections Options Report – Draft Route
2.6	Cable Sealing End Compound Sites – Bridgwater Tee Options
2.7	Cable Sealing End Compound Sites Considered South and North of the Mendip Hills Area of Outstanding Natural Beauty
2.8	Substation Siting Study Area
2.9	AT Route Connection Study Area, Route Corridors, Preferred Route Corridor and Preferred Alignment
2.10	Churchill, W and Y Route Options
2.11	N Route Options into Sandford Substation
<b>Volume 5.2.3.4</b>	
2.12	W Route Options
2.13	W Route Preferred Option
2.14	The Proposed Development (Preliminary Environmental Information Report)
<b>Volume 5.2.3.5</b>	
2.15	Section A Horsey Level to Woolavington Level
2.16	Section A Bridgwater Tee Cable Sealing End Compound
2.17	Section B Mark and Southwick
2.18	Section B Tarnock
2.19	Section D Sandford to Puxton
2.20	Section D Southwest of Nailsea
2.21	Section D West of Nailsea
2.22	Section E Tickenham Ridge
2.23	Section F M5 to Portishead Substation
2.24	Portishead Substation
2.25	Section G River Avon Crossing
2.26	Section G River Avon Crossing
2.27	Section G Avonmouth
2.28	Section G Avonmouth
2.29	Section G Severnside
2.30	Section G Seabank

Figure 2.5 – Connections Options Report – Draft Route





**Key**

**Draft Route from Connections Option Report**

- Draft Route (Overhead Line)
- Draft Route (Underground Cable)
- Proposed Area for Cable Sealing End Compound
- Proposed Area for Substation and Cable Sealing End
- Proposed 132kV Connection Preferred Route Corridor

**Section Boundary**

- Section Boundary

**Existing Infrastructure**

- Existing 400kV Overhead Line
- Existing 275kV Overhead Line
- Existing Western Power Distribution Overhead Line
- Existing Western Power Distribution 132kV Overhead Line for Removal
- Existing Substation
- Existing Cable Sealing End Compound

**Consented Infrastructure**

- Shurton 400kV Substation

**Notes**  
This map includes data from the following sources:  
- National Grid  
- Ordnance Survey

This map is based upon Ordnance Survey material with the permission of Ordnance Survey on behalf of the Controller of Her Majesty's Stationery Office © Crown copyright. Unauthorised reproduction infringes Crown copyright and may lead to prosecution or civil proceedings.  
Licence No. 100024241 2014.  
Contains Ordnance Survey data © Crown copyright and database right 2014.

A	08/09/2014	DCO SUBMISSION	CB	CC	BC
ISSUE	DATE	COMMENTS	DRAW	CHKD	APP'D

**Title**  
NATIONAL GRID (HINKLEY POINT C CONNECTION PROJECT)  
ENVIRONMENTAL STATEMENT  
VOLUME 5.2.3  
CONNECTIONS OPTIONS REPORT  
DRAFT ROUTE

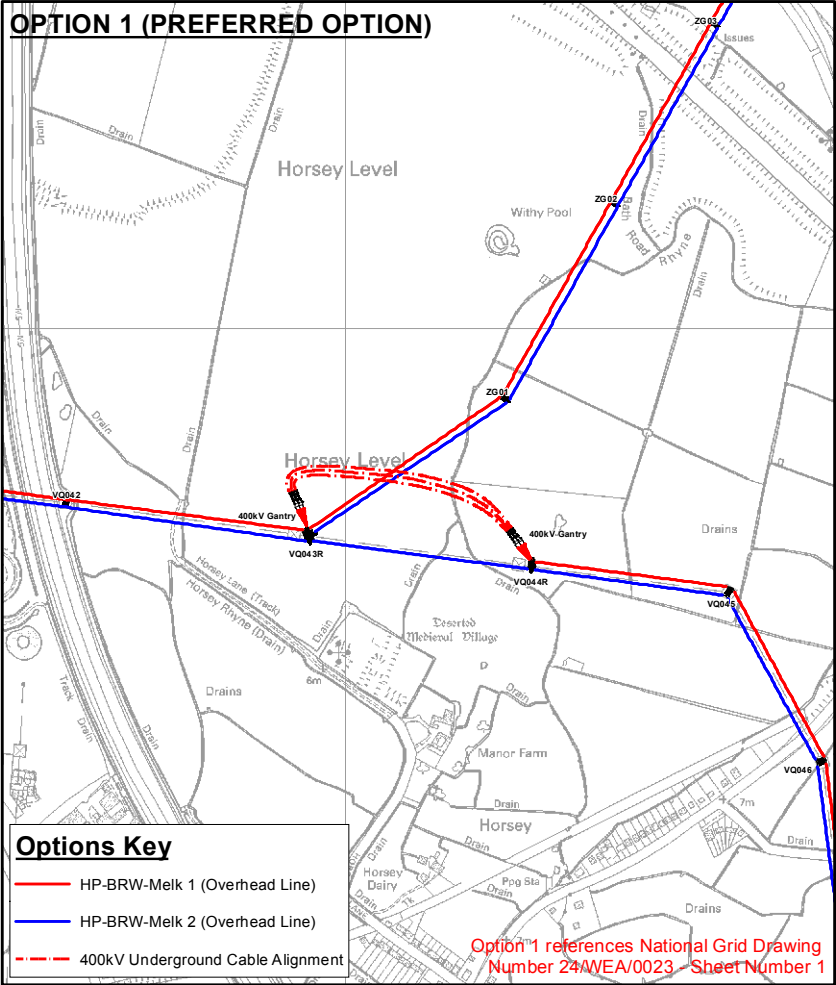
nationalgrid			
National Grid plc, Watlington Technology Park, Watlington Hill, Watlington, CV34 6DA			
NG INVESTMENT No.	APPLICATION No.		GIS
20897	EN020001		A3
FIGURE No.	DRAWING No.		SCALE
2.5	G1979.2427B		1:170,000
			ISSUE
SHEET 1 OF 1			A



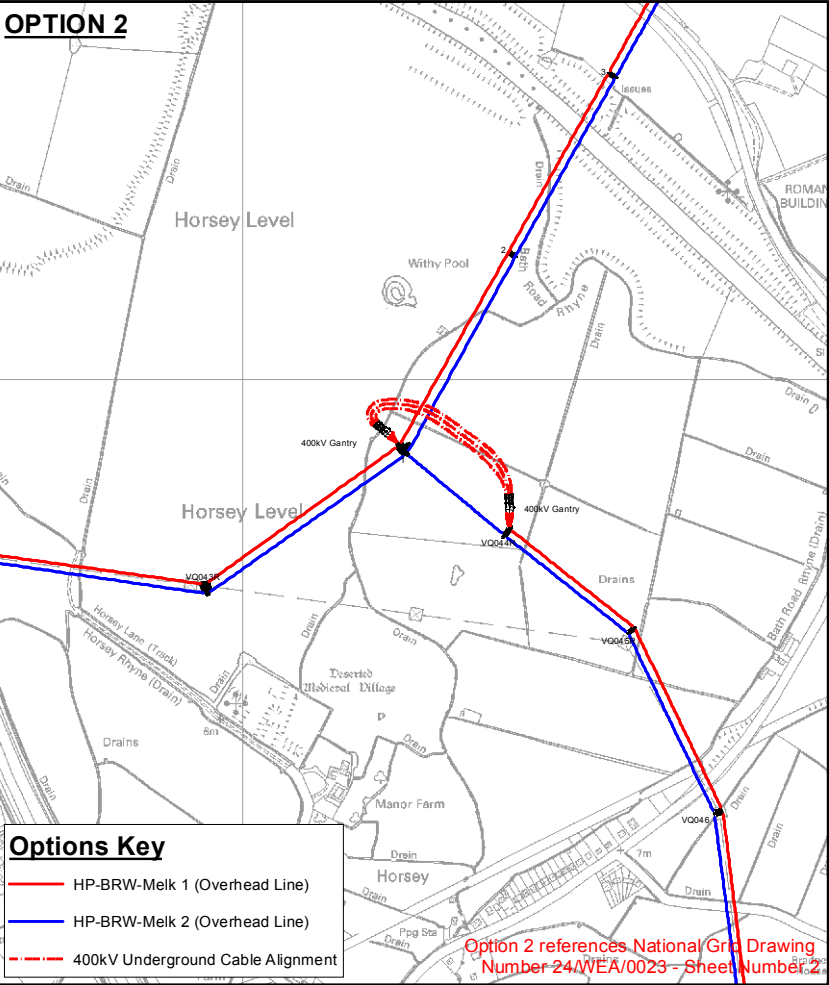
Figure 2.6 – Cable Sealing End Compound Sites – Bridgwater Tee Options



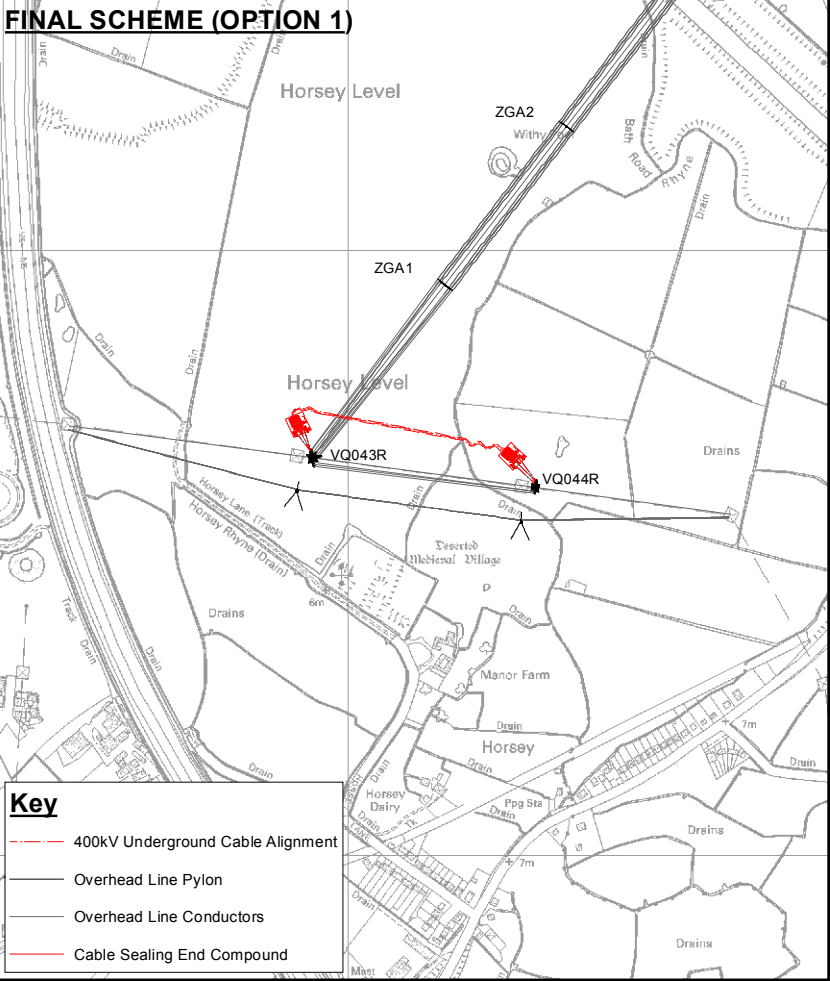
OPTION 1 (PREFERRED OPTION)



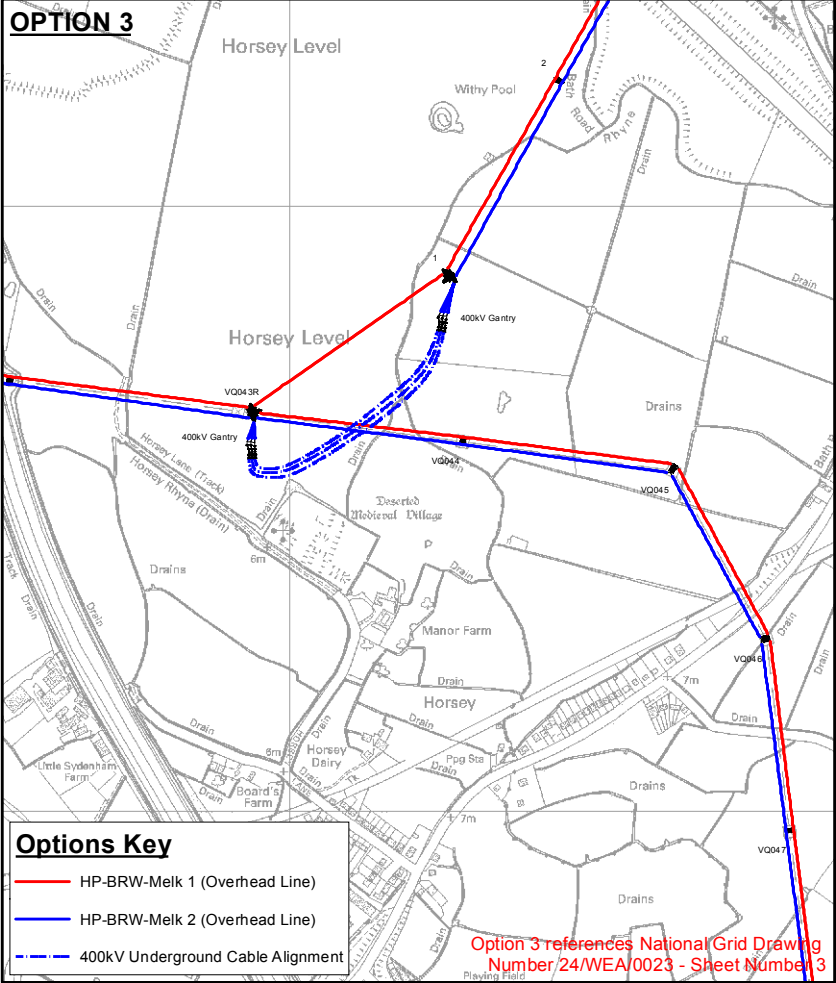
OPTION 2



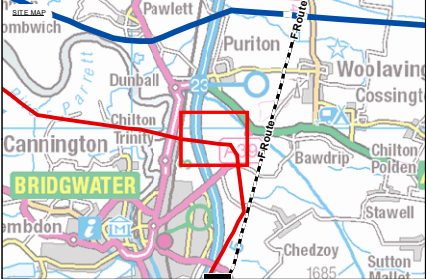
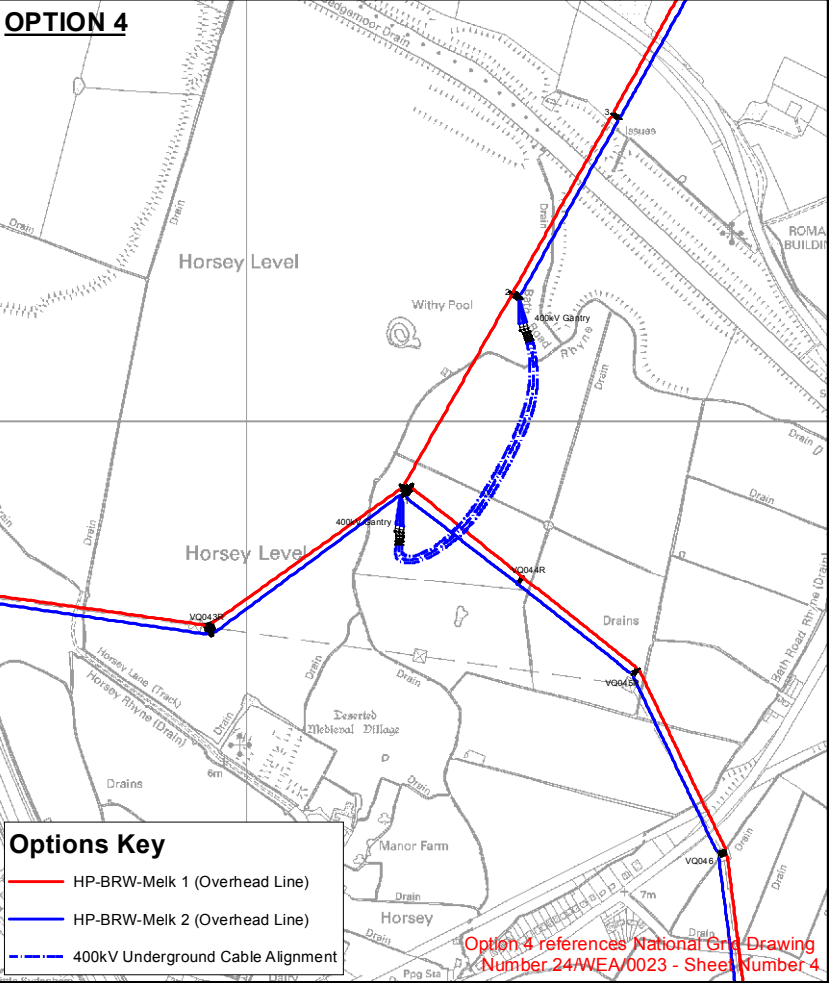
FINAL SCHEME (OPTION 1)



OPTION 3



OPTION 4



**NOTE**

This map includes data from the following sources:

- National Grid
- Ordnance Survey

This map is based upon Ordnance Survey material with the permission of Ordnance Survey on behalf of the Controller of Her Majesty's Stationery Office © Crown copyright. Unauthorised reproduction infringes Crown copyright and may lead to prosecution or civil proceedings. Licence No. 100024241 2014.

COPYRIGHT NOT TO BE REPRODUCED WITHOUT THE WRITTEN PERMISSION OF THE NATIONAL GRID ELECTRICITY TRANSMISSION Plc

A	09/05/14	DCO SUBMISSION	CB	BC	BC
ISSUE	DATE	COMMENTS	DRAW	CHKD	APPD

Title

NATIONAL GRID (HINKLEY POINT C CONNECTION PROJECT)  
ENVIRONMENTAL STATEMENT  
VOLUME 5.2.3

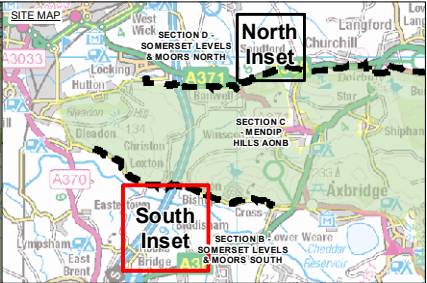
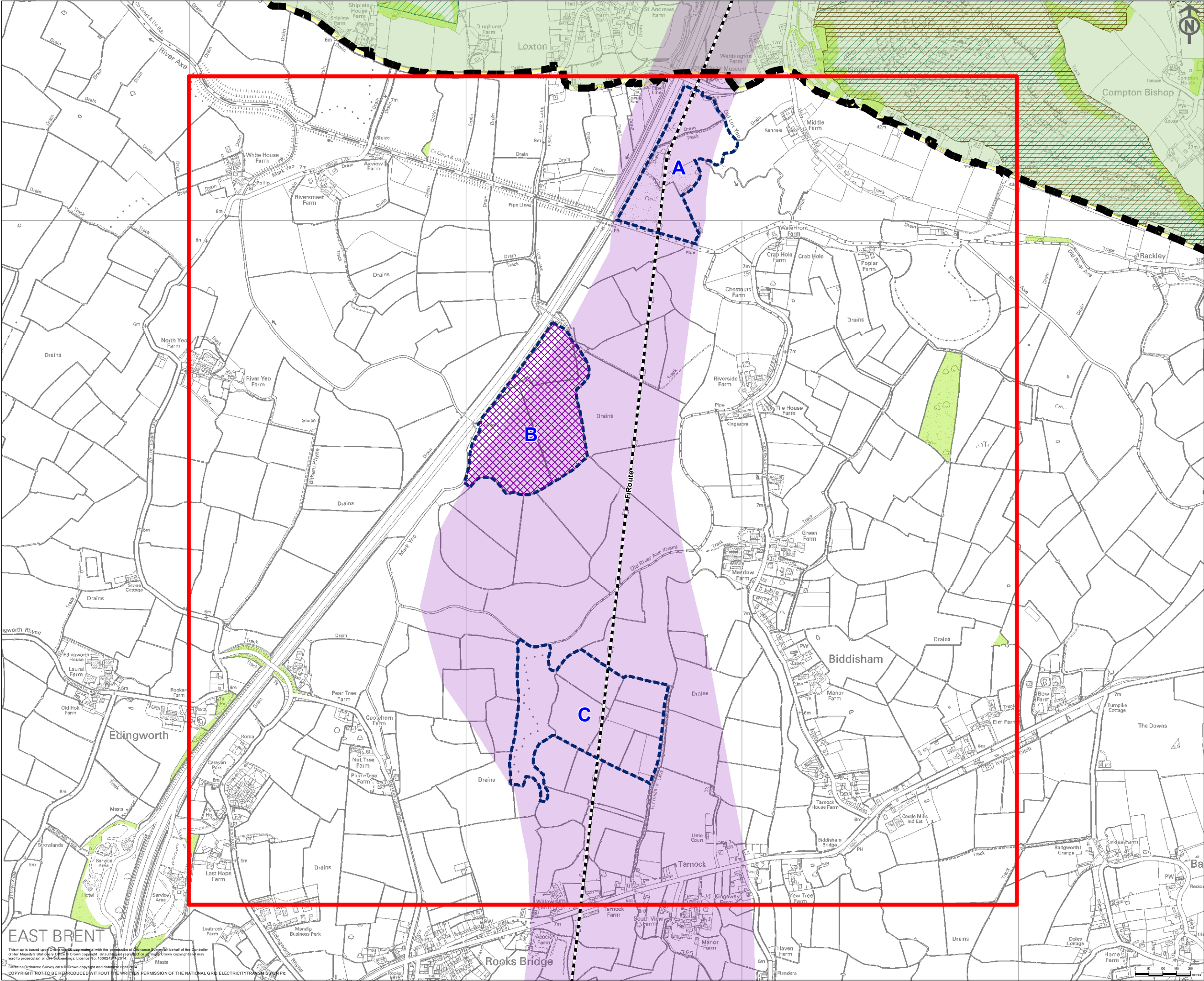
CABLE SEALING END COMPOUND SITES - BRIDGWATER TEE OPTIONS

<div><div></div><div>nationalgrid</div><div>National Grid plc, Warwick Technology Park, Gallows Hill, Warwick, CV34 6DA</div></div>			
NG INVESTMENT No.	APPLICATION No.		GIS
20897	EN020001		A3
FIGURE No.	DRAWING No.	SCALE	ISSUE
2.6	G1979.2419C	1:5,000	
SHEET 1 of 1			A



Figure 2.7 – Cable Sealing End Compound Sites Considered South and North of the Mendip Hills Area of Outstanding Natural Beauty





**Key**

**Study Area**

- Cable Sealing End Compound Study Area

**Proposed Infrastructure**

- Preferred Route Corridor
- Potential Cable Sealing End Compound Area
- Potential Cable Sealing End Compound Area (Preferred Option)

**Site Description**

- A** Land to the north of the River Axe
- B** Land adjacent to the M5 motorway south of the River Axe
- C** Land to the North of Rooks Bridge

**Existing Infrastructure**

- Existing Western Power Distribution 132kV Overhead Line
- Existing Western Power Distribution 132kV Overhead Line for Removal

**Environmental Designations**

- Area of Outstanding Natural Beauty (AONB)
- Special Area of Conservation (SAC)
- Site of Special Scientific Interest (SSSI)
- Woodland

**Section Boundary**

- Section Boundary

**Notes**

This map includes data from the following sources:

- National Grid
- Ordnance Survey

A	01/05/14	DCO SUBMISSION	CB	BC	BC
ISSUE	DATE	COMMENTS	DRAW	CHKD	APPD

**Title**

NATIONAL GRID (HINKLEY POINT C CONNECTION PROJECT)  
ENVIRONMENTAL STATEMENT  
VOLUME 5.2.3

CABLE SEALING END COMPOUND SITES  
CONSIDERED SOUTH AND NORTH  
OF THE MENDIP HILLS (AONB)

**nationalgrid**

National Grid plc, Warwick Technology Park, Gallows Hill, Warwick, CV34 6DA

NG INVESTMENT No.	APPLICATION No.	<b>GIS</b> <b>A3</b>
20897	EN020001	
FIGURE No.	DRAWING No.	SCALE 1:12,500
2.7.1	G1979.2418.1C	ISSUE <b>A</b>

SHEET 1 of 2



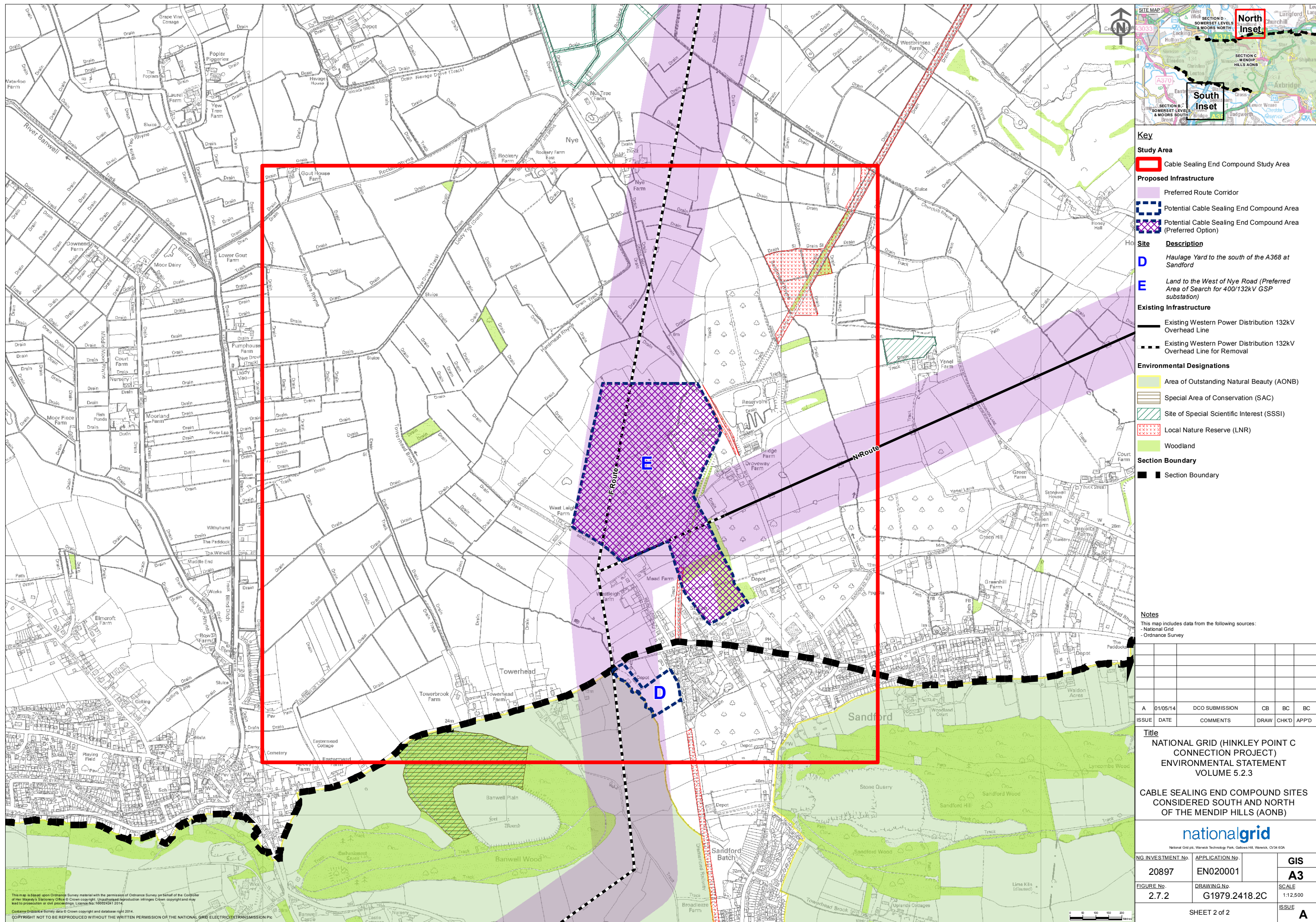
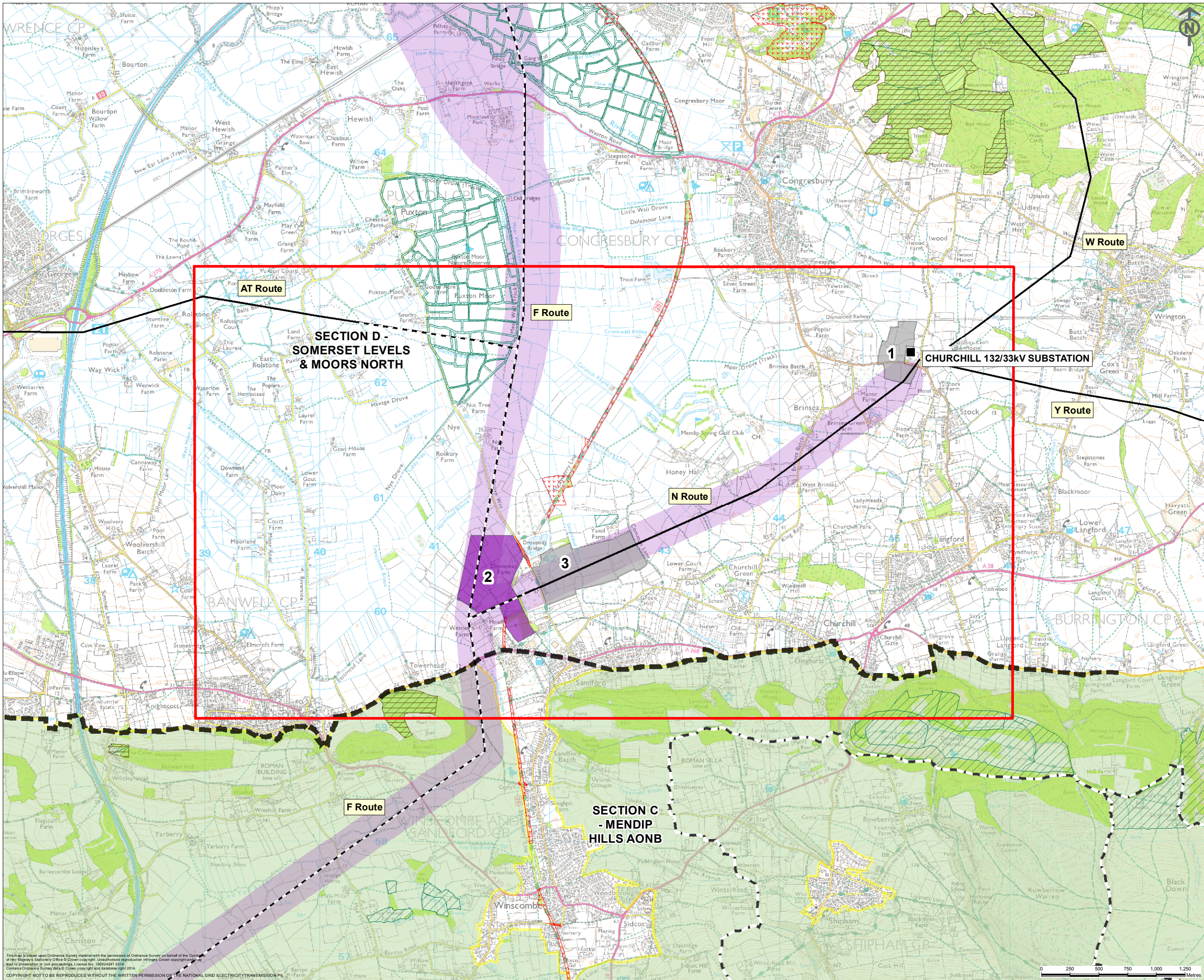


Figure 2.8 – Substation Siting Study Area





**Key**

**Areas of Search**

- Preferred Substation Site 2 – West of Nye Road
- Substation Site Options 1 – Churchill Substation 3 – East of Nye Road
- Study Area

**Proposed Infrastructure**

- Preferred Route Corridor

**Existing Infrastructure**

- Existing Western Power Distribution Overhead Line
- Existing Western Power Distribution 132kV Overhead Line for Removal
- Existing Substation

**Environmental Constraints**

- Area of Outstanding Natural Beauty (AONB)
- Special Area of Conservation (SAC)
- Site of Special Scientific Interest (SSSI)
- Local Nature Reserve (LNR)
- Woodland

**Boundary**

- Local Authority Boundary

**Note**

This map includes data from the following sources:

- National Grid
- Natural England - © Natural England [2014], reproduced with the permission of Natural England, <http://www.naturalengland.org.uk/copyright/>
- English Heritage
- Local Constraints captured from North Somerset Replacement Local Plan (March 2007), Sedgemoor District Local Plan (September 2004), Mendip District Local Plan (December 2002)

A	01/05/2014	DCO SUBMISSION	AH	CB	BC
ISSUE	DATE	COMMENTS	DRAW	CHKD	APPD

**Title**

NATIONAL GRID (HINKLEY POINT C CONNECTION PROJECT)  
ENVIRONMENTAL STATEMENT  
VOLUME 5.2.3

SUBSTATION SITING STUDY AREA

nationalgrid		
National Grid plc, Warwick Technology Park, Gallows Hill, Warwick, CV34 6DA		
NG INVESTMENT No.	APPLICATION No.	GIS
20897	EN020001	A3
FIGURE No.	DRAWING No.	SCALE
2.8	G1979.2420C	1:30,000
SHEET 1 of 1		ISSUE
		A

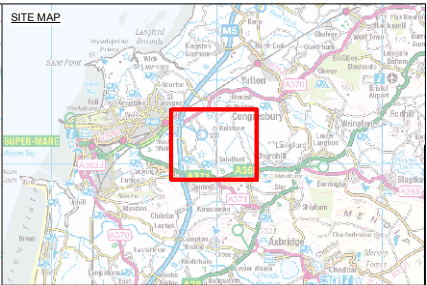
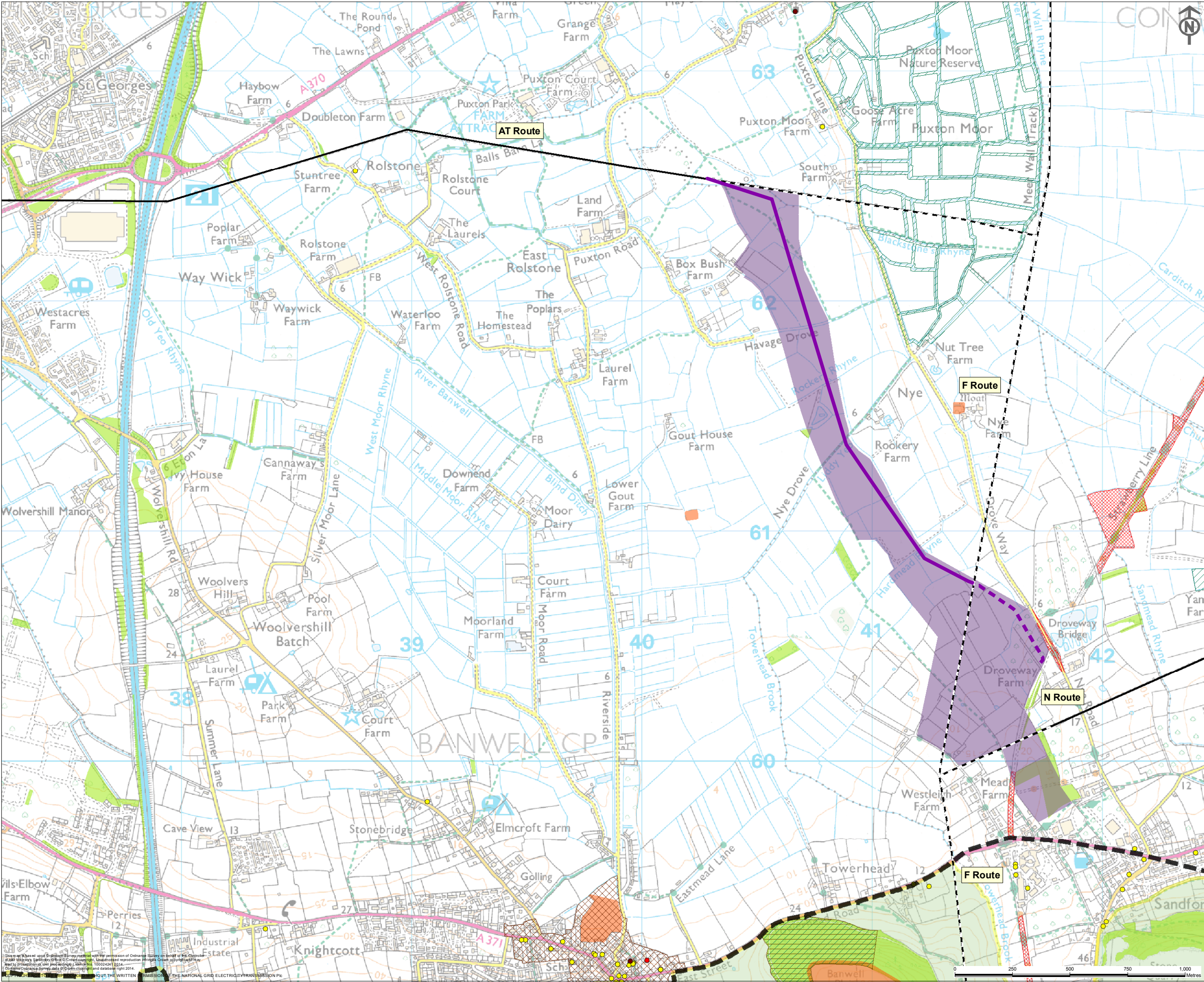


Figure 2.9 – AT Route Connection Study Area, Route Corridors, Preferred Route Corridor and Preferred Alignment









**Key**

**Proposed Development**

- Proposed Route Corridor B (Preferred)

**Preferred Alignment**

- Proposed Route for 132kV Overhead Line
- Proposed Route for 132kV Underground Cable

**Existing Infrastructure**

- Existing Western Power Distribution Overhead Line
- Existing Western Power Distribution Overhead Line to be Removed

**Environmental Constraints**

- Area of Outstanding Natural Beauty (AONB)
- Special Area of Conservation (SAC)
- Site of Special Scientific Interest (SSSI)
- Local Nature Reserve (LNR)
- Listed Building (Grade I)
- Listed Building (Grade II\*)
- Listed Building (Grade II)
- Conservation Area
- Scheduled Monument
- Woodland

**Note**

This map includes data from the following sources:

- National Grid
- Natural England - © Natural England [2014], reproduced with the permission of Natural England, <http://www.naturalengland.org.uk/copyright/>
- English Heritage
- Local Constraints captured from North Somerset Replacement Local Plan (March 2007), Sedgemoor District Local Plan (September 2004), Mendip District Local Plan (December 2002)

A	01/05/2014	DCO SUBMISSION	CB	CC	BC
ISSUE	DATE	COMMENTS	DRAW	CHKD	APPD

**Title**

NATIONAL GRID (HINKLEY POINT C CONNECTION PROJECT)  
ENVIRONMENTAL STATEMENT  
VOLUME 5.2.3

AT ROUTE CONNECTION PREFERRED ROUTE CORRIDOR AND PREFERRED ALIGNMENT

**nationalgrid**

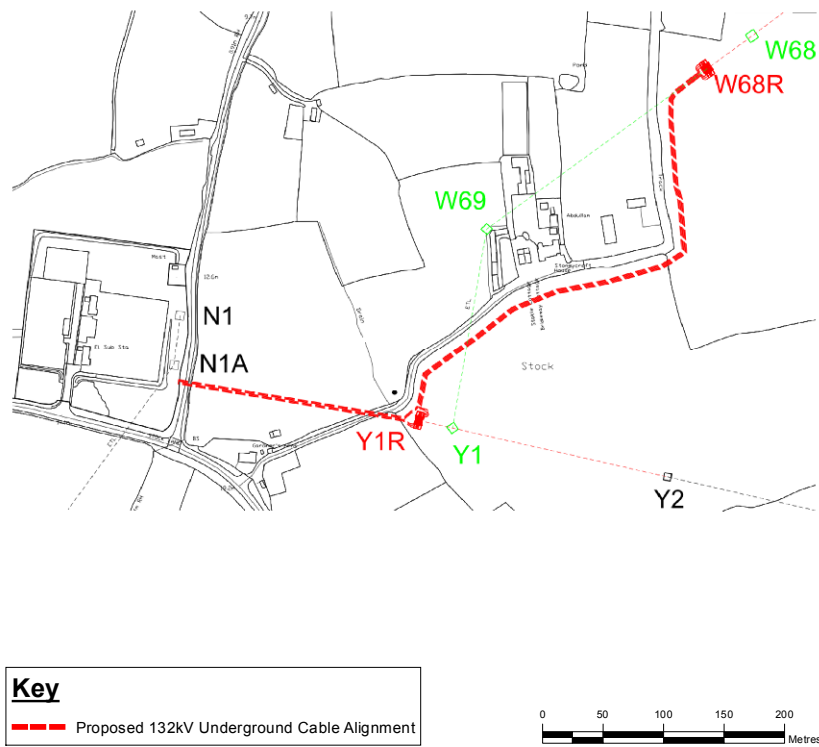
National Grid plc, Warwick Technology Park, Gallows Hill, Warwick, CV34 6DA

NG INVESTMENT No.	APPLICATION No.	<b>GIS</b> <b>A3</b>
20897	EN020001	
FIGURE No.	DRAWING No.	SCALE
2.9.2	G1979.2421.2C	1:15,000
SHEET 2 of 2		ISSUE
		A

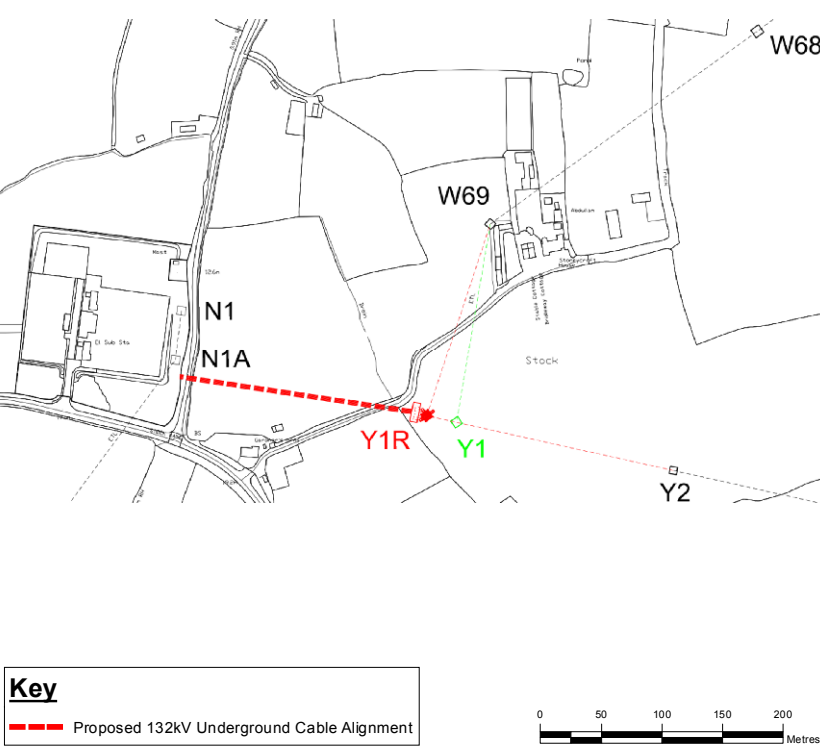


Figure 2.10 – Churchill, W and Y Route Options

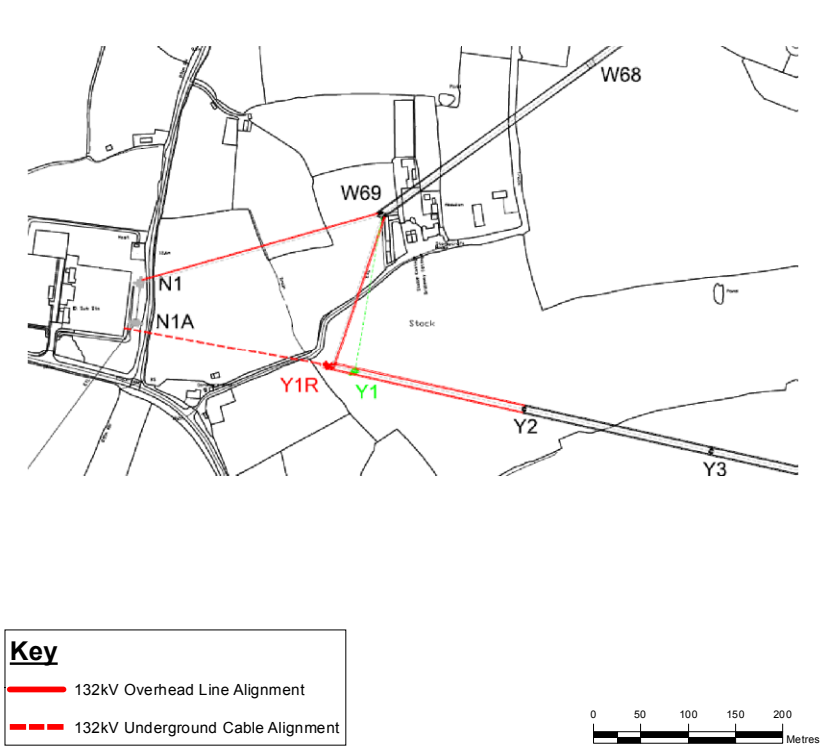
OPTION 1



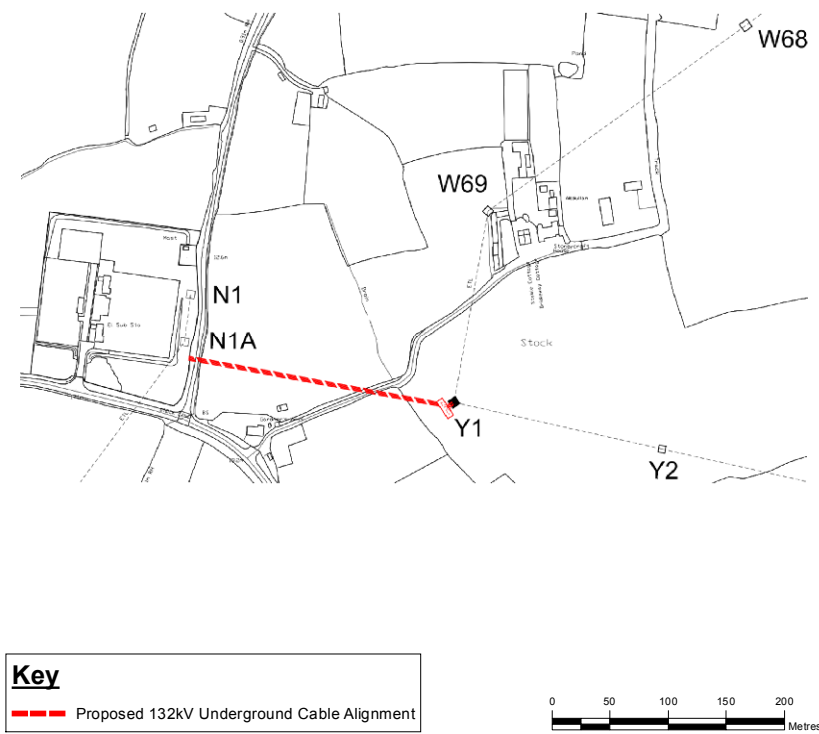
OPTION 2



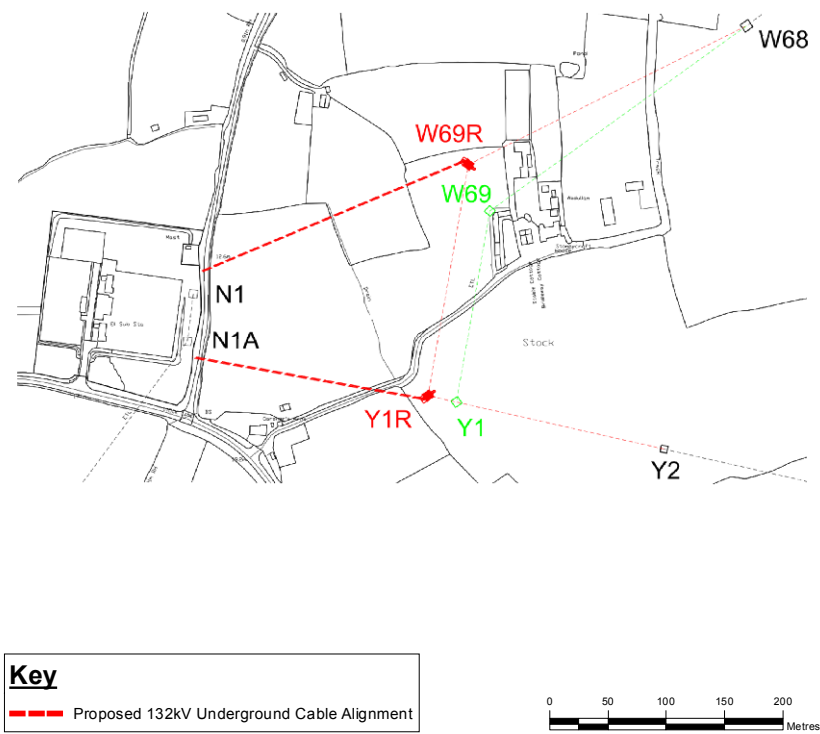
OPTION 3 (PREFERRED)



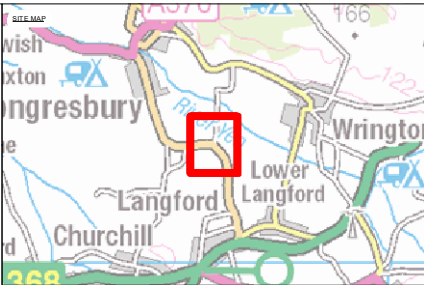
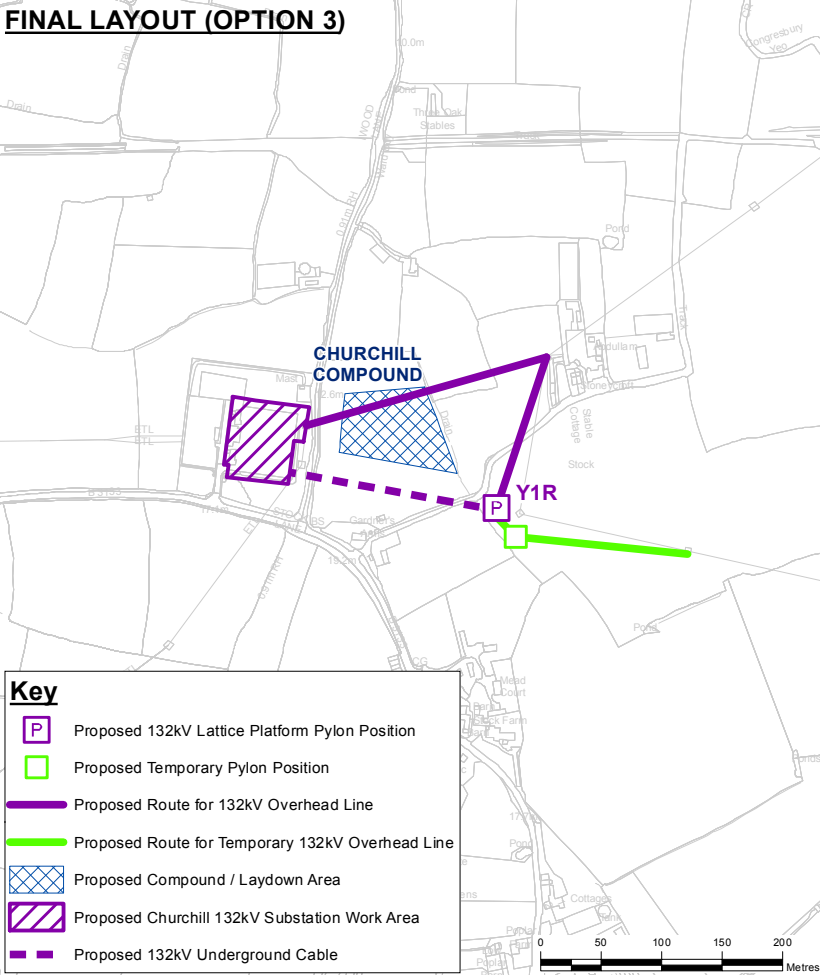
OPTION 4



OPTION 5



FINAL LAYOUT (OPTION 3)



**NOTE**  
This map includes data from the following sources:  
- National Grid  
- Ordnance Survey  
This map is based upon Ordnance Survey material with the permission of Ordnance Survey on behalf of the Controller of Her Majesty's Stationery Office © Crown copyright. Unauthorised reproduction infringes Crown copyright and may lead to prosecution or civil proceedings. Licence No. 100024241 2014.  
COPYRIGHT NOT TO BE REPRODUCED WITHOUT THE WRITTEN PERMISSION OF THE NATIONAL GRID ELECTRICITY TRANSMISSION Plc

A	01/05/14	DCO SUBMISSION	CB	BC	BC
ISSUE	DATE	COMMENTS	DRAW	CHKD	APPD

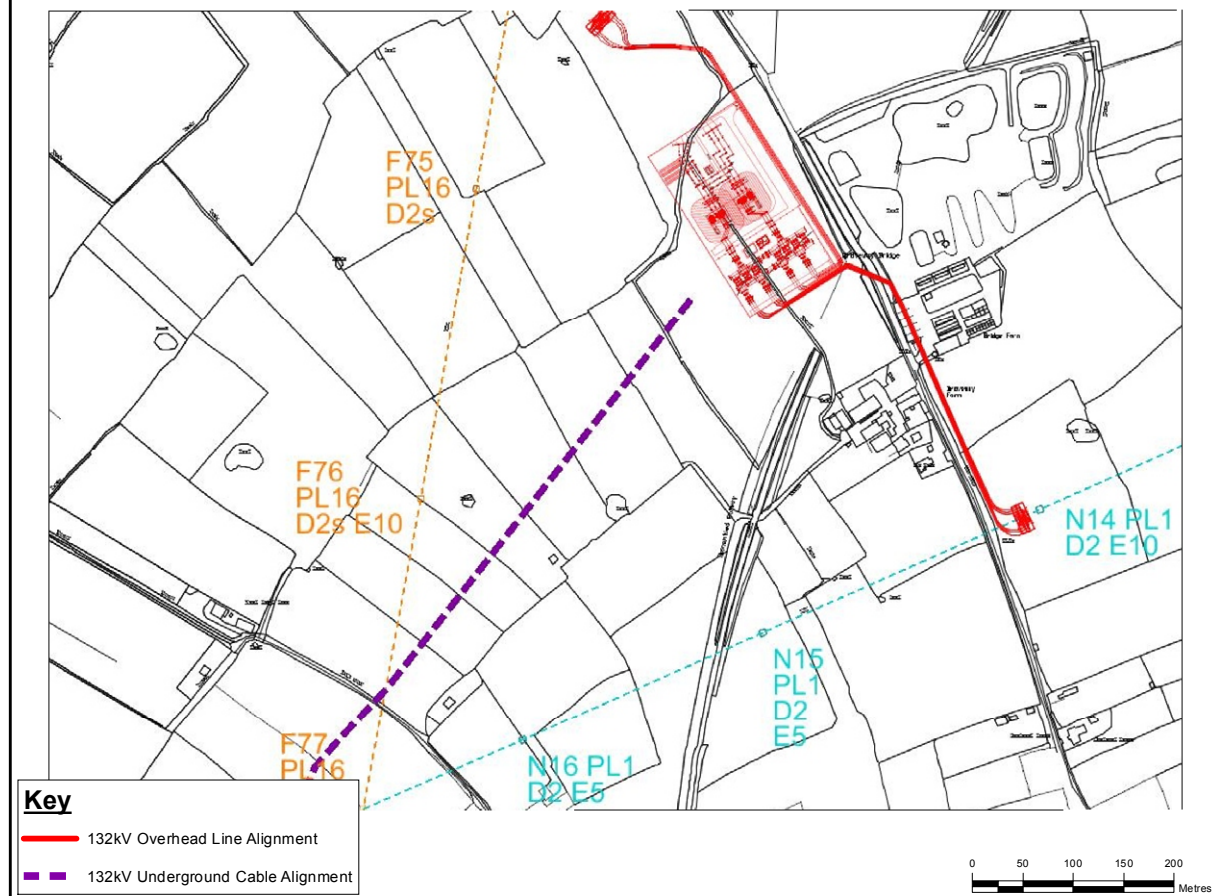
**Title**  
NATIONAL GRID (HINKLEY POINT C CONNECTION PROJECT)  
ENVIRONMENTAL STATEMENT  
VOLUME 5.2.3  
CHURCHILL, W AND Y ROUTE OPTIONS

<div><div></div><div><div><div></div><div></div><div></div></div><div><div></div><div></div><div></div></div><div><div></div><div></div><div></div></div></div><div><div></div><div></div><div></div></div><div><div></div><div></div><div></div></div></div> <div><div></div><div></div><div></div></div> <div><div></div><div></div><div></div></div> <div><div></div><div></div><div></div></div> <div><div></div><div></div><div></div></div> <div><div></div><div></div><div></div></div> <div><div></div><div></div><div></div></div> <div><div></div><div></div><div></div></div> <div><div></div><div></div><div></div></div> <div><div></div><div></div><div></div></div> <div><div></div><div></div><div></div></div> <div><div></div><div></div><div></div></div> <div><div></div><div></div><div></div></div> <div><div></div><div></div><div></div></div> <div><div></div><div></div><div></div></div> <div><div></div><div></div><div></div></div> <div><div></div><div></div><div></div></div> <div><div></div><div></div><div></div></div> <div><div></div><div></div><div></div></div> <div><div></div><div></div><div></div></div> <div><div></div><div></div><div></div></div> <div><div></div><div></div><div></div></div> <div><div></div><div></div><div></div></div> <div><div></div><div></div><div></div></div> <div><div></div><div></div><div></div></div> <div><div></div><div></div><div></div></div> <div><div></div><div></div><div></div></div> <div><div></div><div></div><div></div></div> <div><div></div><div></div><div></div></div> <div><div></div><div></div><div></div></div> <div><div></div><div></div><div></div></div> <div><div></div><div></div><div></div></div> <div><div></div><div></div><div></div></div> <div><div></div><div></div><div></div></div> <div><div></div><div></div><div></div></div> <div><div></div><div></div><div></div></div> <div><div></div><div></div><div></div></div> <div><div></div><div></div><div></div></div> <div><div></div><div></div><div></div></div> <div><div></div><div></div><div></div></div> <div><div></div><div></div><div></div></div> <div><div></div><div></div><div></div></div> <div><div></div><div></div><div></div></div> <div><div></div><div></div><div></div></div> <div><div></div><div></div><div></div></div> <div><div></div><div></div><div></div></div> <div><div></div><div></div><div></div></div> <div><div></div><div></div><div></div></div> <div><div></div><div></div><div></div></div> <div><div></div><div></div><div></div></div> <div><div></div><div></div><div></div></div> <div><div></div><div></div><div></div></div> <div><div></div><div></div><div></div></div> <div><div></div><div></div><div></div></div> <div><div></div><div></div><div></div></div> <div><div></div><div></div><div></div></div> <div><div></div><div></div><div></div></div> <div><div></div><div></div><div></div></div> <div><div></div><div></div><div></div></div> <div><div></div><div></div><div></div></div> <div><div></div><div></div><div></div></div> <div><div></div><div></div><div></div></div> <div><div></div><div></div><div></div></div> <div><div></div><div></div><div></div></div> <div><div></div><div></div><div></div></div> <div><div></div><div></div><div></div></div> <div><div></div><div></div><div></div></div> <div><div></div><div></div><div></div></div> <div><div></div><div></div><div></div></div> <div><div></div><div></div><div></div></div> <div><div></div><div></div><div></div></div> <div><div></div><div></div><div></div></div> <div><div></div><div></div><div></div></div> <div><div></div><div></div><div></div></div> <div><div></div><div></div><div></div></div> <div><div></div><div></div><div></div></div> <div><div></div><div></div><div></div></div> <div><div></div><div></div><div></div></div> <div><div></div><div></div><div></div></div> <div><div></div><div></div><div></div></div> <div><div></div><div></div><div></div></div> <div><div></div><div></div><div></div></div> <div><div></div><div></div><div></div></div> <div><div></div><div></div><div></div></div> <div><div></div><div></div><div></div></div> <div><div></div><div></div><div></div></div> <div><div></div><div></div><div></div></div> <div><div></div><div></div><div></div></div> <div><div></div><div></div><div></div></div> <div><div></div><div></div><div></div></div> <div><div></div><div></div><div></div></div> <div><div></div><div></div><div></div></div> <div><div></div><div></div><div></div></div> <div><div></div><div></div><div></div></div> <div><div></div><div></div><div></div></div> <div><div></div><div></div><div></div></div> <div><div></div><div></div><div></div></div> <div><div></div><div></div><div></div></div> <div><div></div><div></div><div></div></div> <div><div></div><div></div><div></div></div> <div><div></div><div></div><div></div></div> <div><div></div><div></div><div></div></div> <div><div></div><div></div><div></div></div> <div><div></div><div></div><div></div></div> <div><div></div><div></div><div></div></div> <div><div></div><div></div><div></div></div> <div><div></div><div></div><div></div></div> <div><div></div><div></div><div></div></div> <div><div></div><div></div><div></div></div> <div><div></div><div></div><div></div></div> <div><div></div><div></div><div></div></div> <div><div></div><div></div><div></div></div> <div><div></div><div></div><div></div></div> <div><div></div><div></div><div></div></div> <div><div></div><div></div><div></div></div> <div><div></div><div></div><div></div></div> <div><div></div><div></div><div></div></div> <div><div></div><div></div><div></div></div> <div><div></div><div></div><div></div></div> <div><div></div><div></div><div></div></div> <div><div></div><div></div><div></div></div> <div><div></div><div></div><div></div></div> <div><div></div><div></div><div></div></div> <div><div></div><div></div><div></div></div> <div><div></div><div></div><div></div></div> <div><div></div><div></div><div></div></div> <div><div></div><div></div><div></div></div> <div><div></div><div></div><div></div></div> <div><div></div><div></div><div></div></div> <div><div></div><div></div><div></div></div> <div><div></div><div></div><div></div></div> <div><div></div><div></div><div></div></div> <div><div></div><div></div><div></div></div> <div><div></div><div></div><div></div></div> <div><div></div><div></div><div></div></div> <div><div></div><div></div><div></div></div> <div><div></div><div></div><div></div></div> <div><div></div><div></div><div></div></div> <div><div></div><div></div><div></div></div> <div><div></div><div></div><div></div></div> <div><div></div><div></div><div></div></div> <div><div></div><div></div><div></div></div> <div><div></div><div></div><div></div></div> <div><div></div><div></div><div></div></div> <div><div></div><div></div><div></div></div> <div><div></div><div></div><div></div></div> <div><div></div><div></div><div></div></div> <div><div></div><div></div><div></div></div> <div><div></div><div></div><div></div></div> <div><div></div><div></div><div></div></div> <div><div></div><div></div><div></div></div> <div><div></div><div></div><div></div></div> <div><div></div><div></div><div></div></div> <div><div></div><div></div><div></div></div> <div><div></div><div></div><div></div></div> <div><div></div><div></div><div></div></div> <div><div></div><div></div><div></div></div> <div><div></div><div></div><div></div></div> <div><div></div><div></div><div></div></div> <div><div></div><div></div><div></div></div> <div><div></div><div></div><div></div></div> <div><div></div><div></div><div></div></div> <div><div></div><div></div><div></div></div> <div><div></div><div></div><div></div></div> <div><div></div><div></div><div></div></div> <div><div></div><div></div><div></div></div> <div><div></div><div></div><div></div></div> <div><div></div><div></div><div></div></div> <div><div></div><div></div><div></div></div> <div><div></div><div></div><div></div></div> <div><div></div><div></div><div></div></div> <div><div></div><div></div><div></div></div> <div><div></div><div></div><div></div></div> <div><div></div><div></div><div></div></div> <div><div></div><div></div><div></div></div> <div><div></div><div></div><div></div></div> <div><div></div><div></div><div></div></div> <div><div></div><div></div><div></div></div> <div><div></div><div></div><div></div></div> <div><div></div><div></div><div></div></div> <div><div></div><div></div><div></div></div> <div><div></div><div></div><div></div></div> <div><div></div><div></div><div></div></div> <div><div></div><div></div><div></div></div> <div><div></div><div></div><div></div></div> <div><div></div><div></div><div></div></div> <div><div></div><div></div><div></div></div> <div><div></div><div></div><div></div></div> <div><div></div><div></div><div></div></div> <div><div></div><div></div><div></div></div> <div><div></div><div></div><div></div></div> <div><div></div><div></div><div></div></div> <div><div></div><div></div><div></div></div> <div><div></div><div></div><div></div></div> <div><div></div><div></div><div></div></div> <div><div></div><div></div><div></div></div> <div><div></div><div></div><div></div></div> <div><div></div><div></div><div></div></div> <div><div></div><div></div><div></div></div> <div><div></div><div></div><div></div></div> <div><div></div><div></div><div></div></div> <div><div></div><div></div><div></div></div> <div><div></div><div></div><div></div></div> <div><div></div><div></div><div></div></div> <div><div></div><div></div><div></div></div> <div><div></div><div></div><div></div></div> <div><div></div><div></div><div></div></div> <div><div></div><div></div><div></div></div> <div><div></div><div></div><div></div></div> <div><div></div><div></div><div></div></div> <div><div></div><div></div><div></div></div> <div><div></div><div></div><div></div></div> <div><div></div><div></div><div></div></div> <div><div></div><div></div><div></div></div> <div><div></div><div></div><div></div></div> <div><div></div><div></div><div></div></div> <div><div></div><div></div><div></div></div> <div><div></div><div></div><div></div></div> <div><div></div><div></div><div></div></div> <div><div></div><div></div><div></div></div> <div><div></div><div></div><div></div></div> <div><div></div><div></div><div></div></div> <div><div></div><div></div><div></div></div> <div><div></div><div></div><div></div></div> <div><div></div><div></div><div></div></div> <div><div></div><div></div><div></div></div> <div><div></div><div></div><div></div></div> <div><div></div><div></div><div></div></div> <div><div></div><div></div><div></div></div> <div><div></div><div></div><div></div></div> <div><div></div><div></div><div></div></div> <div><div></div><div></div><div></div></div> <div><div></div><div></div><div></div></div> <div><div></div><div></div><div></div></div> <div><div></div><div></div><div></div></div> <div><div></div><div></div><div></div></div> <div><div></div><div></div><div></div></div> <div><div></div><div></div><div></div></div> <div><div></div><div></div><div></div></div> <div><div></div><div></div><div></div></div> <div><div></div><div></div><div></div></div> <div><div></div><div></div><div></div></div> <div><div></div><div></div><div></div></div> <div><div></div><div></div><div></div></div> <div><div></div><div></div><div></div></div> <div><div></div><div></div><div></div></div> <div><div></div><div></div><div></div></div> <div><div></div><div></div><div></div></div> <div><div></div><div></div><div></div></div> <div><div></div><div></div><div></div></div> <div><div></div><div></div><div></div></div> <div><div></div><div></div><div></div></div> <div><div></div><div></div><div></div></div> <div><div></div><div></div><div></div></div> <div><div></div><div></div><div></div></div> <div><div></div><div></div><div></div></div> <div><div></div><div></div><div></div></div> <div></div>			
---	--	--	--

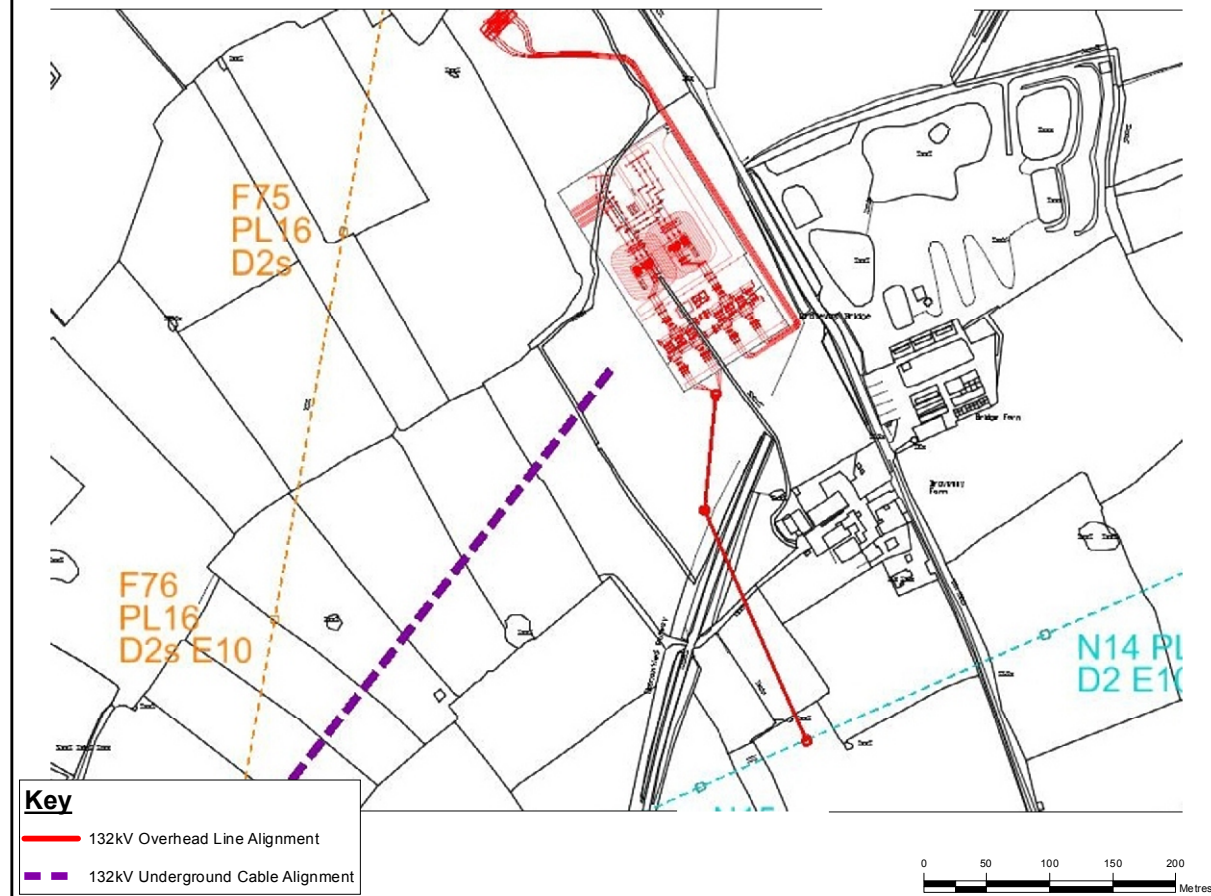


Figure 2.11 – N Route Options into Sandford Substation

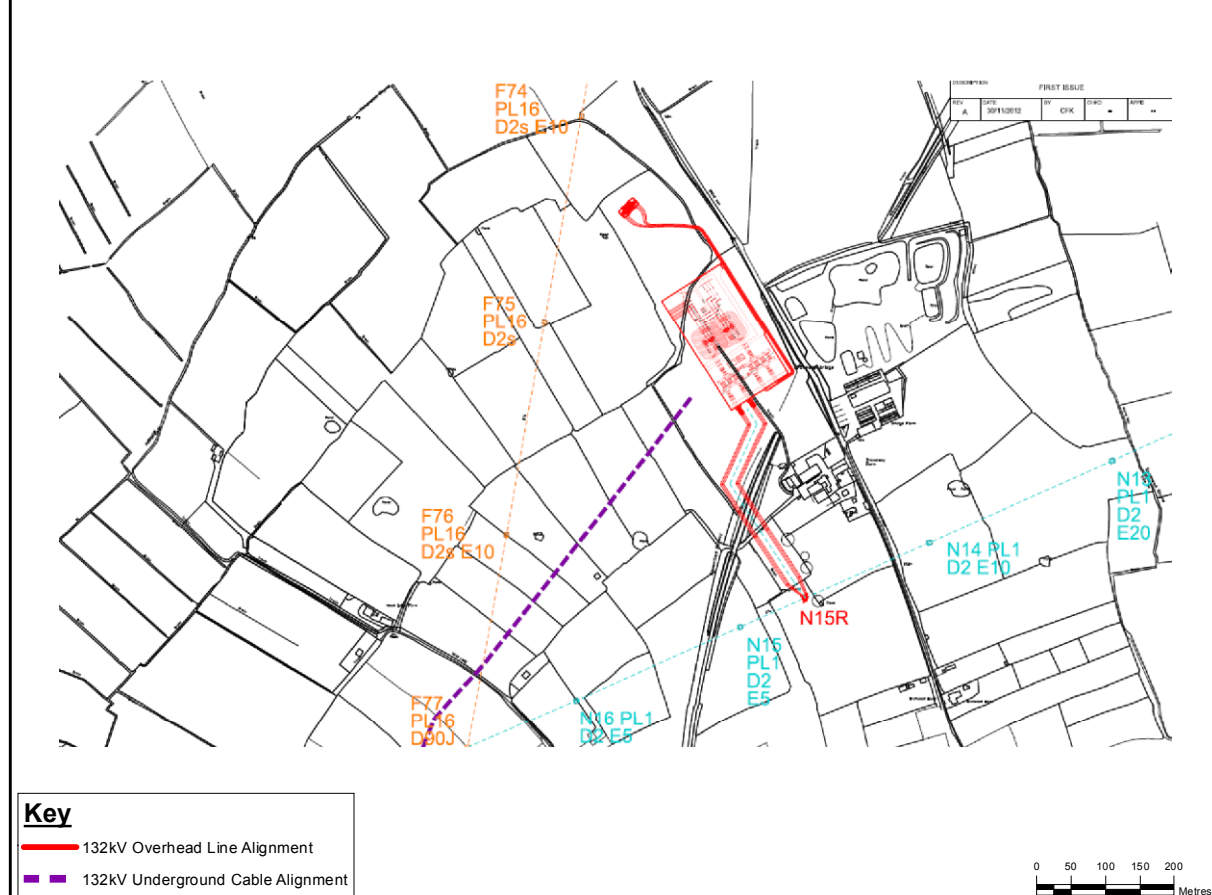
### OPTION 1



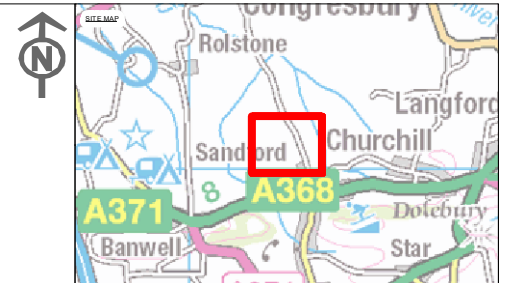
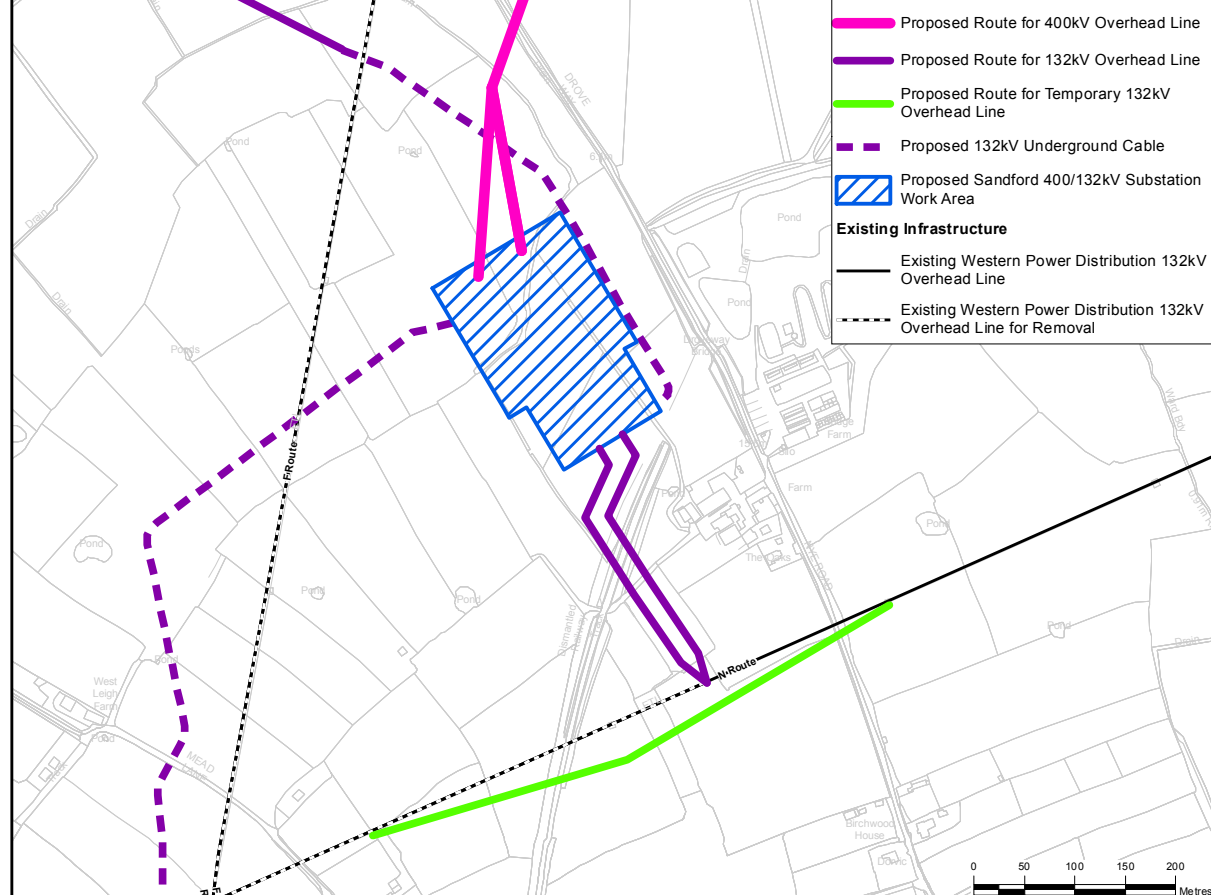
### OPTION 2



**OPTION 3 (PREFERRED OPTION)**



### **FINAL LAYOUT (OPTION 3)**



**NOTE**

This map includes data from the following sources:

- National Grid
- Ordnance Survey

This map is based upon Ordnance Survey material with the permission of Ordnance Survey on behalf of the Controller of Her Majesty's Stationery Office © Crown copyright. Unauthorised reproduction infringes Crown copyright and may lead to prosecution or civil proceedings. Licence No. 100024241 2014.

COPYRIGHT NOT TO BE REPRODUCED WITHOUT  
THE WRITTEN PERMISSION OF THE NATIONAL GRID  
ELECTRICITY TRANSMISSION Plc

A	09/05/14	DCO SUBMISSION	CB	BC	BC
ISSUE	DATE	COMMENTS	DRAW	CHKD	APPD

Title  
NATIONAL GRID (HINKLEY POINT C  
CONNECTION PROJECT)  
ENVIRONMENTAL STATEMENT  
VOLUME 5.2.3

### N ROUTE OPTIONS INTO SANDFORD SUBSTATION

**nationalgrid**

National Grid plc, Warwick Technology Park, Gallows Hill, Warwick, CV34 6DA

NG INVESTMENT No. <b>20897</b>	APPLICATION No. <b>EN020001</b>	<b>GIS</b> <b>A3</b>
FIGURE No. <b>2.11</b>	DRAWING No. <b>G1979.2425C</b>	<b>SCALE</b> <b>SEE INSETS</b>
<b>SHEET 1 of 1</b>		<b>ISSUE</b> <b>A</b>